

Mild and sunny. Wet for most, drier in the South

March 2026 was mild and relatively wet overall. Low pressure to the northwest and high pressure to the southeast brought a mobile Atlantic regime for much of the month with winds mostly between southerly and westerly. This led to periods of frontal rain or showers at times, sometimes heavy, but also periods where transient ridges of high pressure brought some dry days with pleasant spring sunshine. The first week saw low pressure to the northwest push active weather fronts across the country from the west on Sunday 1st and on Thursday 5th, with heavy rain in places. High pressure to the south and east brought drier and sunnier conditions on other days. It became much windier during the second week with deep low pressure systems to the northwest bringing rain or showers on most days. Widespread heavy rain, sometimes thundery, swept across the country on Thursday 12th followed by a few cool days with wintry showers. The third week began with low pressure to the Northwest sending weather fronts, interspersed with showers, across the country in a westerly airflow. High pressure built over the country during the second half of the week and brought a calm, sunny, relatively warm and dry period between Thursday 19th and Saturday 21st. The final ten days of the month saw a mobile Atlantic regime returning with further periods of rain or showers, including heavy frontal rain crossing the country on Tuesday 24th, interspersed with a few mostly dry days.

Rainfall: Above average in most places, dry in the South and Southeast

The majority of monthly rainfall totals were above their 1991-2020 Long-Term Average (LTA). Percentage of monthly rainfall values ranged from 51% (37.2 mm) at Roches Point, Co Cork to 156% (112.0 mm) at Gurteen, Co Tipperary. Monthly rainfall totals ranged from 37.2 mm (51% of its LTA) at Roches Point, Co Cork to 168.7 mm (130% of its LTA) at Newport, Co Mayo. The highest daily rainfall total was 35.2 mm at Athenry, Co Galway on Tuesday 24th (*its highest daily fall for March on record (length 35 years)*). The number of rain days⁰ ranged from 15 days at Phoenix Park, Co Dublin to 26 days at both Newport, Co Mayo and Valentia Observatory, Co Kerry. The number of wet days¹ ranged from 7 days at Roches Point, Co Cork to 20 days at a few stations. The number of very wet days³ ranged from zero days at both Roches Point, Co Cork and Johnstown Castle, Co Wexford to 6 days at Newport, Co Mayo.

Temperature: Above average everywhere

All mean air temperatures across the country were above their LTA for the month. Deviations from mean air temperature ranged from 0.6 °C at Belmullet, Co Mayo and Valentia Observatory, Co Kerry (8.2 °C, 8.7 °C mean temperature respectively) to 1.2 °C at Phoenix Park, Co Dublin (8.1 °C mean temperature). Mean temperatures for the month ranged from 6.8 °C (1.1 °C above its LTA) at Knock Airport, Co Mayo to 8.9 °C (0.8 °C above its LTA) at Sherkin Island, Co Cork. The month's highest temperature was reported at Valentia Observatory, Co Kerry on Thursday 19th with a temperature of 19.1 °C (*its highest max for March since 2012*). The month's lowest air minimum was recorded on Friday 6th at Markree, Co Sligo with -3.8 °C while the lowest grass minimum was -8.6 °C reported at Dublin Airport, Co Dublin on Tuesday 3rd. All stations reported ground frost during the month. The number of days with ground frost ranged from 3 days at Cork Airport, Co Cork to 18 days at Ballyhaise, Co Cavan. More than half of stations reported air frost. The number of days with air frost ranged from zero days at Mace Head, Co Galway to 7 days at both Markree, Co Sligo and Mount Dillon, Co Roscommon.

Sunshine: Above average, sunniest in the East

All available sunshine totals were above their LTA. Percentage of monthly sunshine values ranged from 109% (121.1 hours) at Shannon Airport, Co Clare to 129% (138.1 hours) at Casement Aerodrome, Co Dublin. Monthly sunshine totals ranged from 108.0 hours (No LTA comparison*) at Valentia Observatory, Co Kerry to 143.0 hours (No LTA comparison*) at Dublin Airport, Co Dublin. The highest number of daily sunshine hours recorded this month was 11.4 hours at both Johnstown Castle, Co Wexford on Saturday 21st and Cork Airport, Co Cork on Thursday 19th. The number of dull days² ranged from 3 days at Casement Aerodrome, Co Dublin to 10 days at Valentia Observatory, Co Kerry.

Wind: Storm Force winds reported at one station

Monthly mean wind speeds ranged from 6.4 knots (11.9 km/h) at Moore Park, Co Cork to 17.3 knots (32.0 km/h) at Mace Head, Co Galway. Gales were reported on the 12 days during the month with strong gales reported on Wednesday 11th, Thursday 12th, Friday 13th, Sunday 15th, Tuesday 24th and Wednesday 25th. North-westerly mean wind speeds reached storm force on Wednesday 25th at Malin Head, Co Donegal. The number of days with gales ranged from zero days at Dublin Airport, Co Dublin to 9 days at both Mace Head, Co Galway and Malin Head, Co Donegal. The number of days with up to strong gales ranged from zero days at most stations to 5 days at Mace Head, Co Galway. The number of days with storms force winds was 1 day at Malin Head, Co Donegal. Both the month's highest gust and 10-minute mean wind speed was reported at Malin Head, Co Donegal on Wednesday 25th. The highest gust was 62 knots (115 km/h) while the month's highest 10-minute mean wind speed was 48 knots (89 km/h). Mullingar, Co Westmeath had its highest gust for March since 2008 on Sunday 15th with a gust of 45 knots (83 km/h). Belmullet, Co Mayo has its highest monthly mean wind speed for March (15.1 knots) since 1999 and Knock Airport had its highest monthly mean wind speed for March (11.9 knots) since 2008.

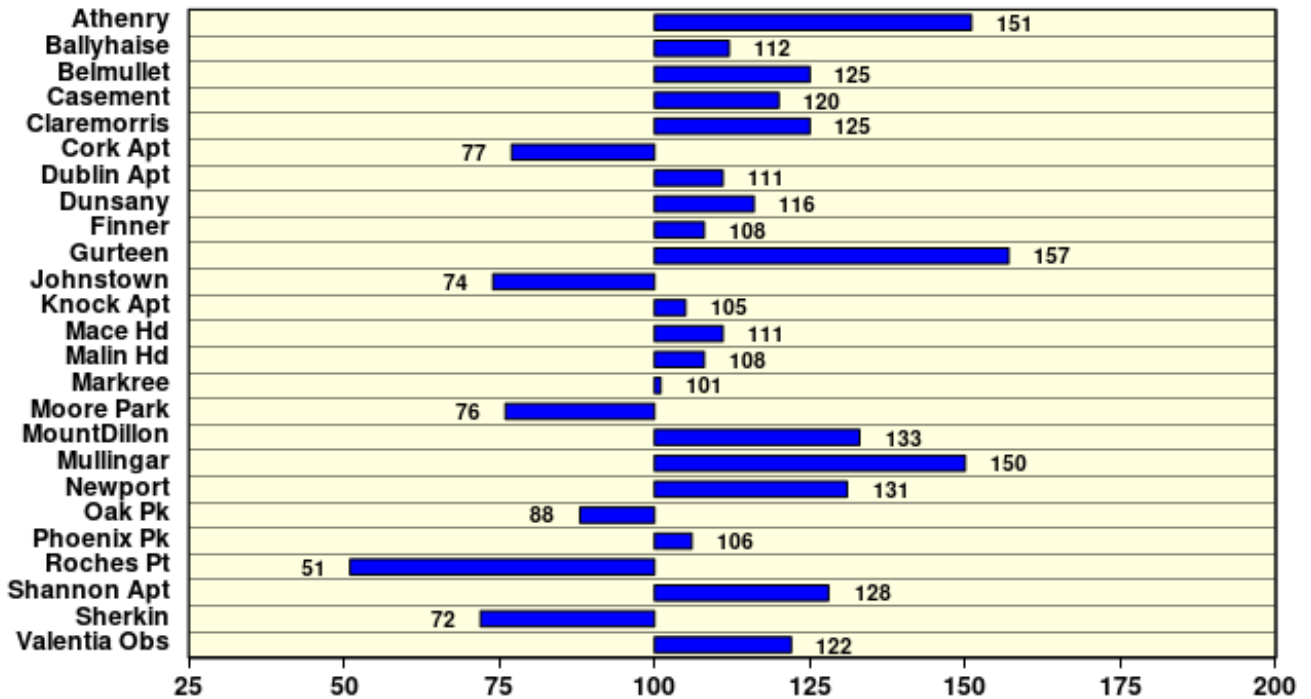
EXTREME VALUES AT SYNOPTIC STATIONS

Rainfall	Highest monthly total: 168.7 mm at Newport, Co Mayo (131% of its LTA) Lowest monthly total: 37.2 mm at Roches Point, Co Cork (51% of its LTA) (<i>its driest March since 2012</i>) Highest daily rainfall: 35.2 mm at Athenry, Co Galway (39% of its monthly LTA) on Tue 24th (<i>its highest daily fall for March on record (length 35 years)</i>)
Temperature	Highest mean monthly temperature: 8.9°C at Sherkin Island, Co Cork (0.8°C above its LTA) Lowest mean monthly temperature: 6.8°C at Knock Airport, Co Mayo (1.1°C above its LTA) Highest air temperature: 19.1°C at Valentia Observatory, Co Kerry (8.1°C above its LTA) on Thu 19th (<i>its highest max for March since 2012</i>) Lowest air temperature: -3.8 °C at Markree, Co Sligo (6.1°C below its LTA) on Fri 6th Lowest grass minimum: -8.6°C at Dublin Airport, Co Dublin on Tue 3rd
Sunshine	Highest monthly total: 143.0 hours (daily mean 4.61 hrs/day) at Dublin Airport, Co Dublin Lowest monthly total: 108.0 hours (daily mean 3.48 hrs/day) at Valentia Observatory, Co Kerry (<i>its dullest February since 1947</i>) Highest daily sunshine: 11.4 hours at both Cork Airport, Co Cork on Thu 19th and Johnstown Castle, Co Wexford on Sat 21st

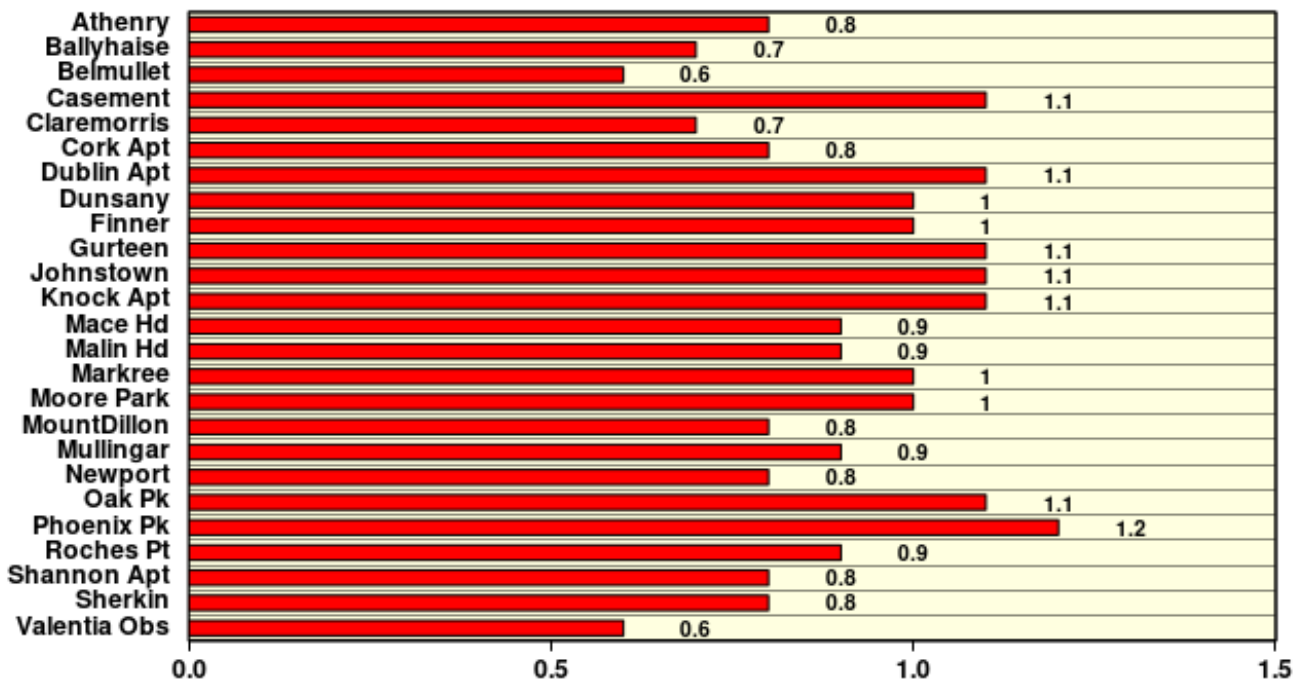
March 2026

Based on Data from 1- 31 March 2026 on whole month basis

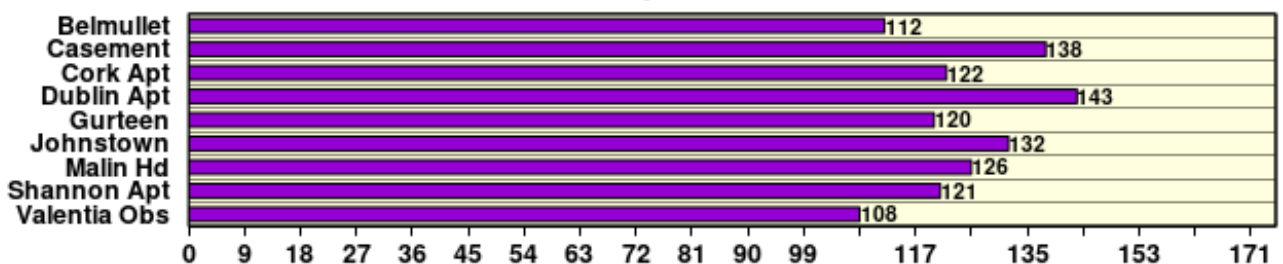
Rainfall (% of average for period 1991-2020) on whole month basis



Temperature (°C) (difference from average for period 1991-2020)



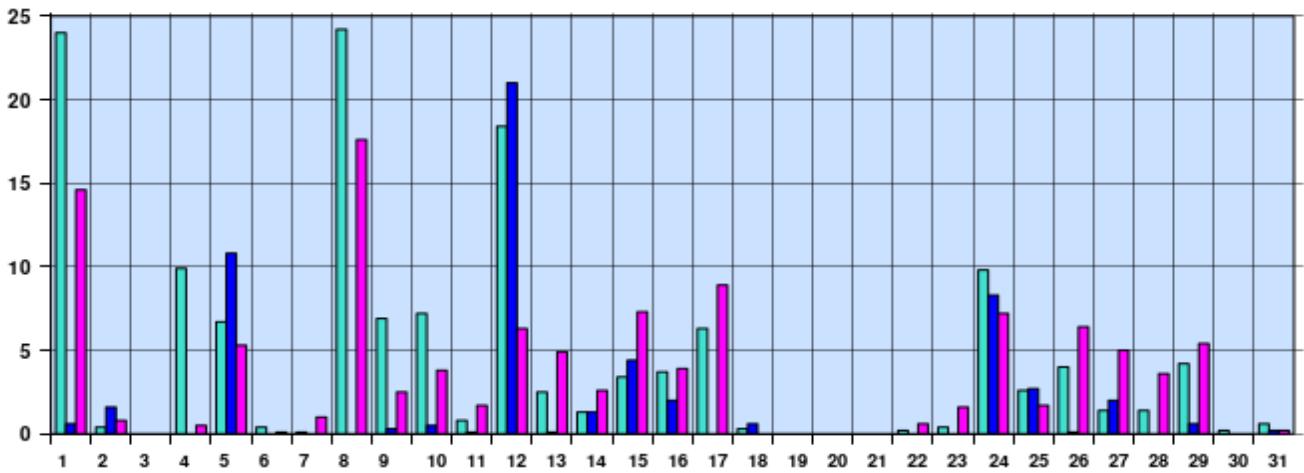
Sunshine (Number of monthly sunshine hours)



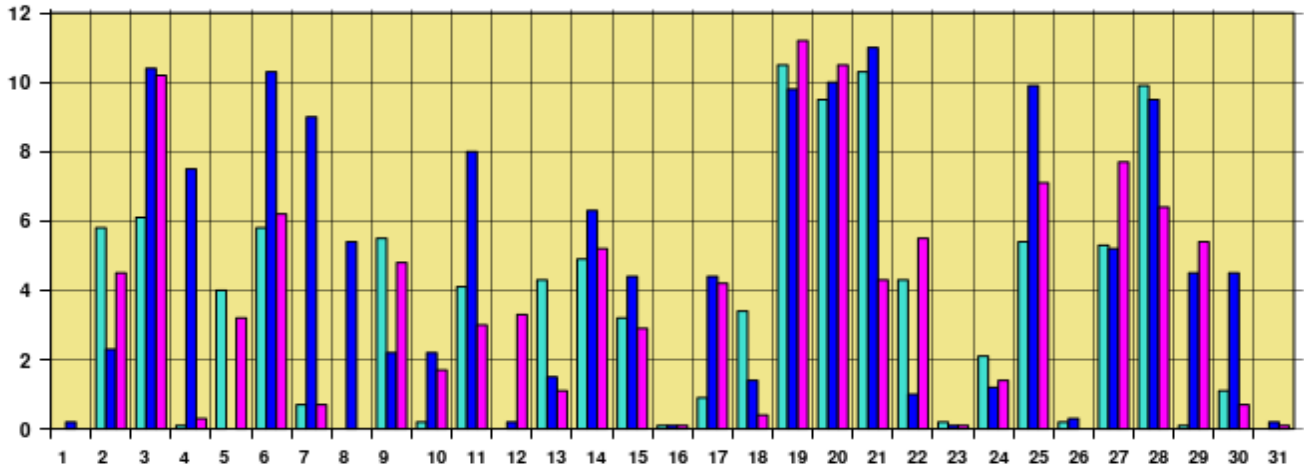
March 2026 Daily Values at Selected Synoptic Stations

Based on data from 1-31 March 2026 on a pro rata basis

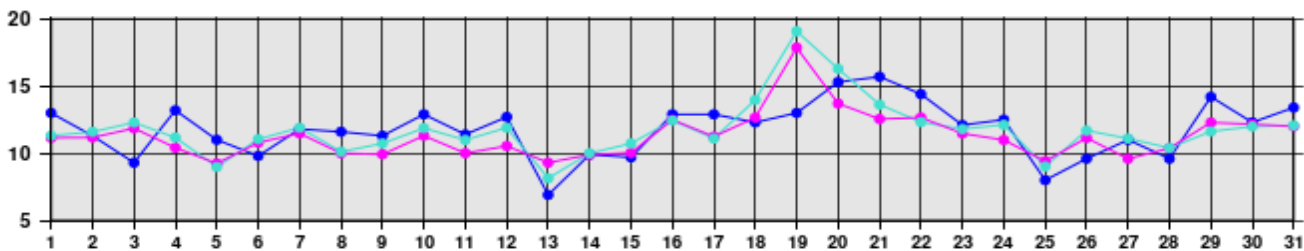
Daily 00-24h rainfall values (mm)



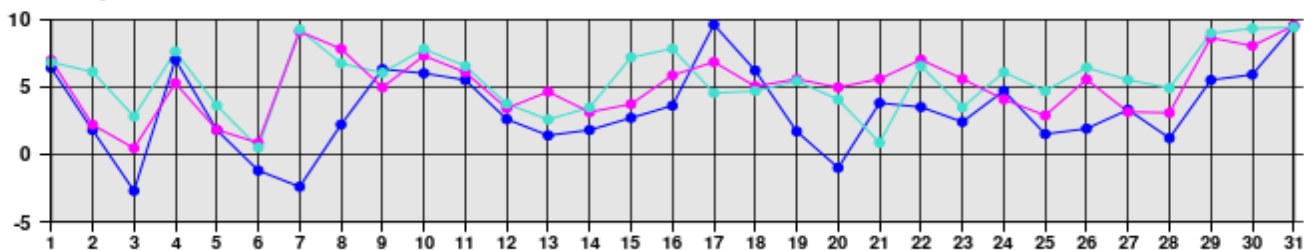
Daily sunshine values (hours)



Daily 00-24h maximum temperature (°C)



Daily 00-24h minimum temperature (°C)



- Valentia Observatory - Dublin Airport - Belmullet

Issued by Met Éireann on Thursday 2nd April 2026. This report is based on available preliminary data from 25 principal weather stations operated by Met Éireann. Synoptic station data is daily, which is midnight to midnight UTC. Long-Term Averages (LTAs) and "average" refer to the period 1991-2020. ¹ A rain day is a day with 0.2 mm or more of rainfall. ² A wet day is a day with 1.0 mm or more of rainfall. ³ A dull day is a day with less than 0.5 hours of sunshine. ⁴ A very wet day is a day with 10.0 mm or more of rainfall. ⁵ An absolute drought is a period of 15 or more consecutive days to none of which is credited 0.2 mm or more of precipitation. ⁶ A partial drought is a period of at least 29 consecutive days, the mean daily rainfall of which does not exceed 0.2 mm. ⁷ A dry spell is a period of 15 or more consecutive days to none of which is credited 1.0 mm or more of precipitation (i.e. daily tot < 1.0 mm). ⁸ A heatwave occurs where there are 5 consecutive days or more with maximum temperature over 25°C (that is, a daily maximum screen air temperature > 25° C). ⁹ An icing day is when the daily maximum air temperature stays below 0 °C (measured from 09-09 UTC or 00-00 UTC) *Sunshine data is from the Autosol Network. LTAs for these sites are currently not used for comparison purposes. For more information, contact Met Éireann at 01-8064200 or e-mail: enq@met.ie